

2025

YMCA
CHRISTMAS
CAMPS



IMPORTANT DATES TO NOTE:

MEMBER ENROLMENT DATE:

31 OCT 2025 (FRI) 9PM

NON-MEMBER ENROLMENT DATE:

3 NOV 2025 (MON) 9PM





CHRISTMAS CAROLING

Tram party

Who's ready to jump aboard for a tram party with drinks and snacks through the lively streets of Hong Kong? Join us for a delightful Christmas Caroling adventure, where families will glide along the iconic tram tracks, singing cherished Christmas carols and meeting Santa Claus!

Course Code: 25SCEPCC1200301

Date: 24 Dec (Wed)

Time: 1900-2130

Age: 4 or above

(All children must be accompanied by at least one adult)

Price: Mem\$490 N-Mem\$590

**Registration & Dismissal Point:
Whitty Street Tram Depot (Entrance at Hill Road)**



COUNTDOWN PARTY OVERNIGHT CAMP

Who is ready to launch into 2026 with an explosion of fun? Get set for an unforgettable night packed with games, pizzas, and a breathtaking fireworks display that will light up the sky! Campers will experience a special overnight stay at YMCA Salisbury. Don't miss out this chance to start the year with unforgettable memories and a whole lot of laughter!

Course Code: 25SCEPCC1200501

Date: 31 Dec - 1 Jan (Wed-Thu)

Time: 2000 (31/12)-1500 (1/1)

Age: 6-14


Price: Mem\$2590 N-Mem\$2790

**Registration & Dismissal Location:
YMCA of Hong Kong (Tsim Sha Tsui)**





CHRISTMAS CELEBRATION (LAMMA)



Experience the magic of the Christmas season at our private campsite on Lamma Island, where festive spirit fills the air! Campers will savor a heartwarming barbecue surrounded by nature, craft their very own Christmas decorations to take home, and conquer the challenges of the natural rock wall. And if we're on our best behavior, who knows? Santa Claus might just drop by on his sleigh for a special surprise!

Course Code: 25SCCCLC1200401

Date: 25-26 Dec (Thu-Fri)

Time: 1000-1700

Age: 5-9

Price: Mem\$2190 N-Mem\$2390

**Registration & Dismissal Location:
Central Pier No.4**





JUNGLE ADVENTURE DAY CAMP

Adventure camps are a magical way to spark the adventurous and curious spirit in your little ones! This festive season, they will dive into a delightful array of activities while making new friends and sharing laughter. Campers will experience Christmas themed art and crafts, bakery, sport climbing and other activities. Entertained with fun, educational and eye-opening experiences.



Course Code: 25SCAJYC1200201

Date: 18-19 Dec (Thu-Fri)

Time: 0830-1630

Age: 4-6

Price: Mem\$2190 N-Mem\$2390

**Registration & Dismissal Location:
YMCA of Hong Kong (Tsim Sha Tsui)**





CHRISTMAS TREE HUNT DAY CAMP

Embark on a whimsical journey with us in our Christmas-themed tree hunt, where campers will set off on an exciting adventure across Hong Kong to uncover the mystery of the lost Christmas Tree! Along the way, we've lined up a sleigh-full of festive activities, including fun-filled camp games and imaginative arts and crafts, all designed to spread joy and capture the magic of the Christmas spirit!

Course Code: 25SCAJTC1200301

Date: 22-24 Dec (Mon-Wed)

Time: 0830-1630

Age: 5-9

Price: Mem\$3090 N-Mem\$3290

**Registration & Dismissal Location:
YMCA of Hong Kong (Tsim Sha Tsui)**



NATURE EXPLORER DAY CAMP (LAMMA)

Embark on an unforgettable adventure and spend quality time in nature at our Nature Explorer Day Camp, campers can let their artistic side shine through in handicraft activities like tie dye, while also challenging their physical limits in our natural rock climbing, nature walk, outdoor cooking and games.

25SCAENC1200101 - Camp 1: 15-17 Dec (Mon-Wed)

25SCAENC1200501 - Camp 2: 29-31 Dec (Mon-Wed)

Time: 1000-1700

Age: 5-12

Price: Mem\$3090 N-Mem\$3290

**Registration & Dismissal Location:
Central Pier No.4**



ALL STAR SPORTS DAY CAMP

Join us for an energetic All Star Sports Day Camp, where campers will experience different sports such as basketball, football, sports climbing, dodge ball and more. Campers will head home not just healthier but transformed, filled with newfound maturity and confidence!

25SCSASC1200101 - Camp 1: 15-17 Dec (Mon-Wed)

25SCSASC1200501 - Camp 2: 29-31 Dec (Mon-Wed)

Time: 0830-1630

Age: 5-10

Price: Mem\$3090 N-Mem\$3290

**Registration & Dismissal Location:
YMCA of Hong Kong (Tsim Sha Tsui)**



A blue background with numerous white snowflakes of various sizes scattered across the top half of the page.

NATURE SCIENCE DAY CAMP (LAMMA)

Young explorers will embark on a thrilling outdoor science safari, diving into exciting hands-on experiments. They will explore the wonders of chemistry through playful activities that spark curiosity, ignite creativity, and foster teamwork while having a blast in nature!

COURSE CODE: 25SCTSDC1200201

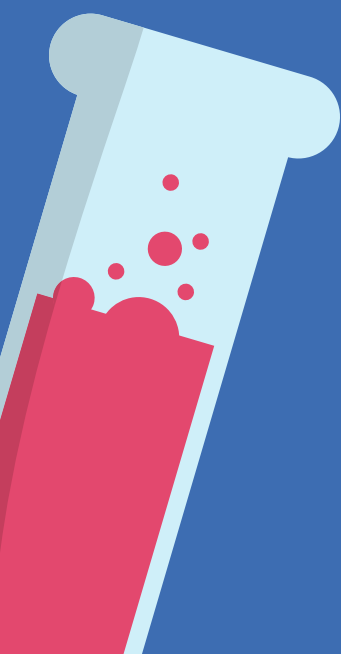
Date: 18-19 Dec (Thu-Fri)











TIME: 1000-1700

AGE: 5-12

PRICE: MEM\$2190 N-MEM\$2390

**REGISTRATION & DISMISSAL LOCATION:
CENTRAL PIER NO.4**





WILD COOKERY DAY CAMP (LAMMA)

The Wild Cooking Day Camp challenges campers to unleash their culinary creativity in the great outdoors, where they'll use simple tools to whip up delicious meals amid nature's beauty. Paired with exciting games and engaging activities, this unique cooking experience promises to be not just a meal, but a memorable adventure filled with flavour and fun!

Course Code: 25SCTODC1200301

Camp: 22-24 Dec (Mon-Wed)

Time: 1000-1700

Age: 6-12

Price: Mem\$3090 N-Mem\$3290

**Registration & Dismissal Location:
Central Pier No.4**



FAQ!

常見問題

Refer to the table below for our withdrawal policy:

如需申請退出活動，請參閱下表：

Withdrawal before the first day of registered camp 申請退出活動日期	Percentage (%) of Camp Fee Refunded as E-points E-points 退款百分比 (%)	Applicable Administration Fee 需繳付之行政費用
Withdraw on or before 21 days 活動開始 21 日或以上之前	100%	HKD \$200
Withdraw between 15-20 days 活動開始 15-20 日之前	50%	
Withdraw between 8-14 days 活動開始 8-14 日之前	25%	
Withdraw within 7 days 活動開始前7日或少於七日	Non-Refundable 不設退款	

Camping Section 日營部: camping@ymcahk.org.hk / 2268 7079

Member Services 會員部: 2268 7060 (09:00 to 19:00)

FAQ!

常見問題



**What should I do if I want a camp transfer?
如需要轉班，該如何辦理有關手續？**

A

Requests for camp transfer must be received no later than 14 days prior to the commencement of the camp, and can only be entertained if space permits and the applicant meets camp requirements. A transfer fee of HK\$200 will be applied. Please sub your request in person or email to Camping General camping@ymcahk.org.hk/22687079 (10:00 to 18:00) Please note that camp transfer to another person is not permitted.

家長必須在活動開始前不少於 14 天申請轉班，並且只有在名額許可下及申請人達到歲數要求的情況下方能受理。本會將收取港幣 200 元的行政費用。請以電郵方式聯絡日營部處理，或親臨本會會員服務部處理。
camping@ymcahk.org.hk/22687079 (10:00 to 18:00) 請注意活動並不能轉讓給他人。



If I can't pick up my child on time, will there be any child care services?

如未能於日營指定結束時間接回小朋友，可有托管服務？

FAQ!

常見問題

A

Child Care Service is available from 16:30 to 18:00, the details are as follow:

Pre-registration is required. We do not offer single day post-camp Child Care Service. There are 2 childcare venues, one in YMCA of Hong Kong (TST) and one in Pacific Place (Admiralty). Campers will be transported to the closest venue for childcare. The YMCA of Hong Kong will not hold any responsibility for your child after the listed service time ended. Please select the appropriate childcare options on our online platform.

Campers will be automatically taken to the Child Care Service if they are not picked up by 16:45. A late charge of \$100 will be applied for each late day.

本部設有托管服務時間由 16:30 至 18:00，詳情如下：

本部恕不提供單日托管服務。請在網上平台上選購相應的托管服務。營會後參加者將被送往最接近的托管地點，分別為尖沙咀港青或金鐘太古廣場。服務於每天 18:00 結束後，本部將不會為參加者承擔任何責任。

如家長未能於 16:45 到達指定地點接回參加者，參加者將被送到指定的托管地點，本部將收取 \$100 作當日托管費用。

FAQ!

常見問題



Will there be a refund if my child is sick at the camp date?

如子女因病缺席營會，可有退款？

A

Any Camp Refunds request due to illness must be requested with an official doctor's note alongside the Withdrawal Application Form. The documents must be submitted within 3 days of the absent day. 50% of the camp fee will be refunded through e-wallet.

參加者如因身體不適缺席活動，家長需於 3 日內繳交醫生證明及已填妥之退出活動申請表。50% 款項將退回e-wallet。

FAQ!

常見問題



Can I submit Transfer/ Withdrawal/ Sick Leave applicants via WhatsApp?
可否透過WhatsApp申請轉班退班等事宜的申請?

A

We only accept email and in-person applicants. WhatsApp is only for enquiries.

我們只接受電郵和親身申請，WhatsApp只用作查詢用途。請見諒。

FAQ!

常見問題



Are meals included in the camp?

營裏包括膳食嗎？

A

Yes, all meals are included, lunch for day camps; breakfast, lunch and dinner for residential camps. Parents are also encouraged to prepare some healthy snacks for campers for their snack time.

所有膳食已包括在營費裏，日營的午餐，宿營的早午晚餐。家長可以幫小朋友預備一些健康小食於小息時享用。

FAQ!

常見問題

Q

If my child is not from Hong Kong, is he/she eligible to participate in the summer camp activities?

如果小朋友並非香港出生亦非居住在香港，是否合資格參加夏令營活動？

A

Our summer camp activities welcome participants from all over the world, as long as your child meets the age requirements with identity proof.

我們的夏令營活動歡迎來自世界各地的參加者，只要小朋友的年齡符合報名的夏令營，並持有其所屬國際的身份證明文件即可報名。

FAQ!

常見問題



How can I enrol with the members' price?
如何使用會員價報名?

A

For membership related issues, please visit our Member Services website or contact our Member's Service Department at 2268 7060 during office hour (09:00 to 19:00).
有關會員事宜 請到訪YMCA會員服務網站:
<http://www.ymcahk.org.hk/member/index.php> 或在辦公時間致電會員服務部 2268 7060 (09:00 to 19:00)。

FAQ!

常見問題



How do I log in if I am already a member?
會員如何登入我的帳戶?



Regarding to login information, please check your registered e-mail address or pick “Forget password”. Please contact our Members’ Services Department at 2268 7060 during office hours if you encounter any difficulties.

有關登入帳戶資料，請查看閣下登記會員的電郵或按(忘記密碼)重設。如有問題，請在辦公時間致電會員部 2268 7060。

FAQ!

常見問題



How can I make aware of special requirements? e.g. same group request or food allergies.

我可以在哪裏填寫同組要求或食物敏感？

A

Please notify us at the special requests box if your child has any special requirements like same group request or food allergies.

如有同組要求、食物敏感等，可以再選擇付款的頁面，在特別要求難填寫。

FAQ!

常見問題



How to stay updated with camp information?

我可以在哪裏找到關於日營的最新資訊?

A

Parents will receive a WhatsApp community link for each camp enrolled. These WhatsApp communities will be used to broadcast the latest camp related information.

*Only administrators or saved contacts will have access to parents' phone numbers in these group links for each camp enrolled.

我們本年度開設WhatsApp社群，家長會收到每個人形的WhatsApp社群連結，我們會在這裏發佈與日營有關的最新資訊。

*在此公告群中只有管理員或聯絡人可查看家長電話號碼。

FAQ!

常見問題

Q

What should campers bring to camp?
我要準備些什麼給小朋友去日營?

A

Parents will receive all the camp related information in the WhatsApp community around 2 weeks before the camp.

日營開始前的兩個星期，家長會在WhatsApp社群收到注意事項的訊息。

BAD WEATHER POLICY (DAY CAMPS)

惡劣天氣安排 – 日營

Weather Warning at 7AM 早上七時的天氣警告	Arrangement 有關安排
T1/Amber Rainstorm Alert 一號戒備信號/黃色暴雨警告信號生效	Camps continue with indoor activities as normal unless the situation allows for outdoor activities 日營繼續照常進行室內活動， 除非情況允許進行戶外活動
T3 三號強風信號	Camps continue 日營照常 Outdoor activities will be scheduled indoors 室外活動改為室內
Red Rainstorm Alert/Black Rainstorm Alert/T8 or above 紅色暴雨警告信號/黑色暴雨警告信號/ 八號或以上暴風信號	Camps cancel 日營取消

Dismissal will immediately begin during camp time only when T8 signal or above is announced. In the case of any other weather warnings, camp will continue until scheduled camp time. Parents may choose to pick up campers at any point if they wish.

除了在八號或以上暴風信號生效時，日營會迅速開始解散外，其餘情況，日營將繼續進行至原定時間。如家長有需要，亦可選擇接走其子女。

BAD WEATHER POLICY (RESIDENTIAL CAMPS)

惡劣天氣安排 – 宿營

Weather Warning At 7am on 1st Day of Camp 首天早上七時的天氣警告	Arrangement 有關安排
T1/Amber Rainstorm Alert 一號戒備信號/黃色暴雨警告信號生效	Camps continue 日營如常
T3/Red Rainstorm Alert or above 三號強風信號/紅色或以上暴雨警告信號生效	Morning session cancel 早上活動取消
Weather Warning At 1pm on 1st Day of Camp 首天下午一時的天氣警告	Arrangement 有關安排
T1/ Amber Rainstorm Alert 一號戒備信號/黃色暴雨警告信號生效	Camps resume 宿營恢復
T3/Red Rainstorm Alert or above 三號強風信號/紅色或以上暴雨警告信號生效	Afternoon session cancel 下午活動取消

Residential camps may be resumed when T3 Signal (or above) or Red/Black Rainstorm Signal are no longer active on days other than the last. Please refer to the table above for the cut off time for morning and afternoon sessions.
除最後一天外，當三號強風信號或紅色或以上暴雨警告信號不再生效時，宿營將會恢復進行。請參考上表截止時間。

In the case of T3/ Red Rainstorm Alert or above being hoisted during camp time, weather protocols of the individual campsites will be followed.
如在宿營期間，天文台發出三號強風信號或紅色或以上暴雨警告信號，將遵從有關營地之政策及實際情況決定。

Compensation for cancelled camp days will only be issued in the form of e-points, which can be used to enrol courses in the future with no time limit. 取消活動後的補償僅以電子積分形式發放，可用於日後報讀課程，時間不限。

The YMCA of Hong Kong reserves the right to change instructors, time, venue and content of the programme. If the number of enrolment is not enough to run the camp/programme, we reserve the right to cancel it in our sole discretion, as we deem appropriate.
香港基督教青年會保留更改導師、時間、地點及活動內容的權利。如果註冊人數不足以運行活動，我們保留在我們認為適當的情況下自行決定取消它的權利。

ENROLMENT METHOD

1. ONLINE ENROLMENT



2. IN PERSON ENROLMENT

at our member services counter,
from 0900-1900 every day



ONLINE ENROLMENT

TIPS

網上報名小貼士

- The entire payment process must be completed within 20 minutes.
付款程序需在20分鐘內完成
- Pay attention to email notification
留意電郵通知
You will be informed by email when the enrolment status is updated
eg. entering waitlist, reservation from waitlist or successfully enrol to a camp
進入後補名單、後補活動留位和成功報名後，系統會自動向參加者發出電郵通知。
- After receiving the reservation email, please login to your account to settle the payment before the reserve time.
收到留位電郵通知後請留意預留位置限期，並盡快登入平台處理付款手續，否則系統會自動取消留位。
- My account 善用「我的戶口」
 - PROGRAMME/ACTIVITIES
戶口中可以查閱個人資料及課程記錄。
 - To review personal information, past record, E-point and coupon.
查看電子優惠券或E-point。

ENROLMENT GUIDELINE 網上報名程序簡介

1 ENTER THE ONLINE ENROLMENT PLATFORM AT
MCS.YMCAHK.ORG.HK/CAMPING OR THROUGH QR CODE
進入網上報名網址: MCS.YMCAHK.ORG.HK/CAMPING 或經 QR CODE
進入平台

*** Please prepare participant's information, payable credit card,
or PAYME before enrolment

請於開始報名前準備好參加者登入資料、付款信用卡或
電子支付PAYME，以便順利完成報名。



2 2a. Enter Member / Non-member number and password*
輸入會員或非會員編號及密碼*

2b. Click [Login] 點擊[登入]

* Use the login information that our Member Services sent to you
previously. Please contact them if you haven't receive any
notification e-mail.

請使用早前本會發出至登記電郵的登入資料，如仍未收到，
請盡快聯絡會員服務部查詢。

* Click [Registration for non-member account] button to register a
non-member account for enrolment.

如報名者是非會員身份及/或首次報讀本會課程，請先到網上平台
辦理 [非會員用戶登記]，方可進行課程報名程序。

ENROLMENT GUIDELINE 網上報名程序簡介

3

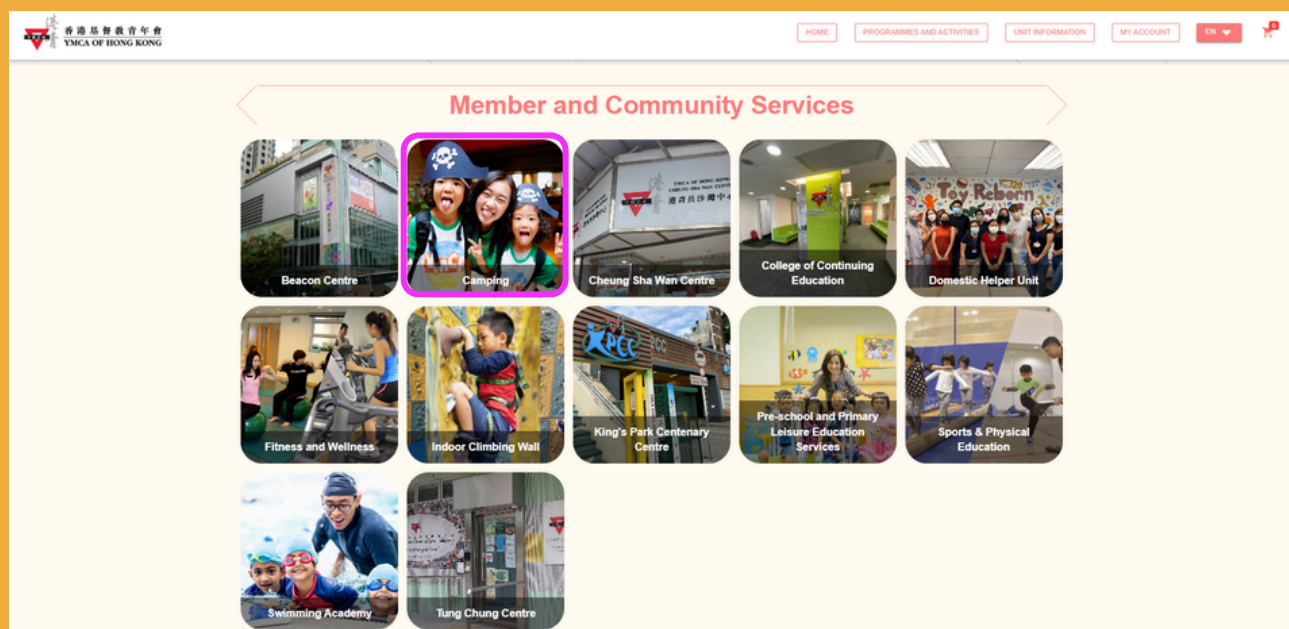
REGISTRATION FOR NON-MEMBER ACCOUNT 非會員登記

3. Enter your personal information, please ensure the date of birth of the participant(child) is accurate, otherwise, you may not be allowed to enrol in the class with age limit.

輸入基本個人資料。請輸入參加者(小朋友)的正確出生日期，否則無法報讀有年齡限制的課程。

4

CLICK "CAMPING". 點擊「日營部」。



ENROLMENT GUIDELINE 網上報名程序簡介

5

CHOOSE THE CAMP THAT PARTICIPANT IS GOING TO REGISTER.

選擇參加者希望參加的日營。



Adventure camps



Explorer Camps



Sports Camps



Specialty Camps



After Camp Child Care Services



Residential Camps



Family Camps

6

Chosen class will be shown in the shopping cart (right hand corner), you can keep browsing or check out.

*If you need child care services, please add into the cart.

點選報名活動後，該活動欄出現 [已選]，活動已成功加入購物車，然後點擊 右上角購物車。

*如有需要託管服務，可增加至購物車。

ENROLMENT GUIDELINE 網上報名程序簡介

The screenshot shows a web form titled "Choose Payment" at the top. Below the title, there is a section for "Enrolled Activity" with the following details: 24SCAJYC0600101, Jungle Adventure Day Camp (YMCA), and 2024-06-24 (Monday) 08:30 - 16:30. To the right of this section, the amount "\$ 5880.00 (NON_MB)" is displayed. A large red-outlined box labeled "7" encompasses the "Special Request" text area. Below this, there are two input fields: "Coupon / E-point" (containing "Coupon Redemption") and "E-point Redemption" (containing "E-point Balance0"). A blue-outlined box labeled "8" highlights the "E-point Redemption" field. At the bottom left, a green-outlined box labeled "9" highlights the "Choose Payment" button and the "VISA" logo.

7

SPECIAL REQUEST
If there are any food allergy, same group request, please fill it in Speical Request Box.
如有任何食物敏感、同組要求或特別需要，請在特別要求欄填寫。

8

E-POINT
E-point in E-wallet can be used
可以使用電子錢包中的 E-point。

9

PAYMENT METHOD
Choose payment method
選擇付款方式

ENROLMENT GUIDELINE 網上報名程序簡介

10

ENTER YOUR PERSONAL INFORMATION 輸入基本個人資料



帳單資訊

* 必填欄位

名字 *

姓氏 *

地址行 1 *

地址行 2

鄉/鎮/市/區 *

國家/地區 *

縣市/州省

郵遞區號

電郵 *

11

ENTER YOUR PAYMENT INFORMATION AND CLICK [PAY].
輸入付款資料，然後點擊 [付款]。

12

SUCCESSFUL APPLICANT WILL BE NOTICED BY A
CONFIRMATION
E-MAIL.

完成付款後，請檢查是否收到確認報讀電郵，收到確認電郵代表
成功報名。

General Information

Camp Staff

Our staff are highly qualified team of responsible young adults committed to each camper to ensure an enjoyable camp experience. All staff are trained prior to your child's arrival. Our staff to camper ratio is an average of 1:7

Instruction Medium

Instruction at Day Camp and Residential & Overnight Camp will be primarily in English.

Meal Arrangement.

All YMCA Day Camps include nutritious hot lunches. Please inform us if your child has any food allergies or restrictions by filling the medical form. Campers are encouraged to bring their own healthy snacks to camp as well.

Camp Behaviour Policy

If a situation arises where a camper threatens the safety or security of another camper, or if a camper shows disregard for camp guidelines, we will make every appropriate effort to inform the parents involved and to correct the behavior to provide a positive camp experience for everyone. However, should disruptive behaviors continue, the child may be dismissed from the camp at the discretion of the YMCA. The YMCA will not be held responsible for any costs associated with a child's dismissal on the grounds of disruptive behavior.

Name and Likeness

The YMCA may take photos and videos from time to time for the purpose of promotion of our camps and of the Association's activities to our member or the public at large. YMCA management retains the right and sole discretion to publish the name and likeness (photo/image/video, etc.) of any person participating in our camps.

Assembly and Dismissal

Please drop off and pick up your children directly at the campsite, unless otherwise specified. (Shuttle Bus Service will be provided for some of the Camps, and all the Residential and Tenting Camps).

Late Pick Up

Campers will automatically taken to the Child Care Service if they are not picked up by his/her guidance by 16:45. A late charge of \$100 will be applied for each late day. Please refer to the Frequently Asked Question. Child Care Service is only applicable for day camps.

General Information

Lost and Found

During camp we will be working hard to ensure that your children return home with all their belongings. However, occasionally some items are left behind. We will collect all of the remaining Lost and Found items and bring them to the Camping Office where we will hold them for period of 1 month before donating them to good-will services. The YMCA reserves the right to discard any wet or soiled items.

Special Needs

YMCA Camps provide Day Camp experience for children with a variety of special needs. A limited number of spaces are available for children requiring one-to-one staff support. Please contact the YMCA Camping Office at 2268 7079 for details.

Fee Structure

The registration fee for each camp includes a daily lunch, out-trip fee including transportation and all venue entrance fees.

After you have enrolled in camp, you will receive: Medical form, Parent Reminder and Bad Weather & Refund Policy.

For safety reasons, please ensure your child (ren) meet the age requirement for each individual camp. We reserve the right to remove all incorrect age enrolments without refund. We do not accept reservation by fax, email or phone. All enrolment is on a first-come, first-serve basis.

Safety and Hygiene Policies

Safety at camp is always our first priority. We have implemented a few policies to ensure the health and well-being of everyone at camp, both campers and staff:

Hygiene- we have hand-washing breaks at regular intervals through the camp schedules to reduce the chances of spreading germs. Caring and sharing are important values we teach at camp, however, we are asking everyone to not share personal snacks during camps. Also, our staff will adhere to strict food handling procedures during cookery programs and mealtime.

Sick Campers- we will be working with all families to ensure the safety of all campers. We are asking a;; campers to remain at if ill .The YMCA reserves the right to send home all ill children or staff.

Campers taking medicine- if campers need to take medicine during camps, parents need to inform the camp coordinator during registration time in the morning. You are required to fill in the Medicine Authorization Form (back of the Medical Form). For safety concerns, the coordinator will help the younger campers to keep the medicine.

基本資料

導師

所有導師均經本部嚴格訓練並以提供最佳活動予參加者為目標。我們的導師與小朋友比例為1:7

教導語言

日營及宿營活動均以英語進行。

膳食安排

所有日營均提供營養午餐。如 貴子女有任何食物敏感或其他需要注意的地方，請在健康申報表上列明以便本部跟進。本部歡迎參加者自行攜帶健康小食於活動休息時享用。

參加者行為處理政策

本部十分重視每位參加者的安全，致力把正面的營會活動體驗帶給每位參加者。如遇有參加者的行為對自己或他人構成危險或不安，或不遵從導師發出的指引，本部會與家長溝通，尋求合適的方法以協助糾正其行為。倘若情況未見改善，本部會在適當情況下請家長帶參加者離開。港青不會對任何因行為問題而離營的參加者作出任何補償。

肖像及姓名

港青保留刊登任何參加者姓名、照片及影像之權利，以作任何本機構的活動宣傳之用。

集合和解散地點

請自行接送 貴子弟前往集合地點。（部份日營、宿營及露營會提供穿梭巴士往返指定集合地點及營地。）

逾時接送

如家長未能於下午四時四十五分到達指定地點接回貴子女，貴子女將被送到指定的托管地點，本部將收取 \$100 作當日托管費用。

詳情請參閱「常見問題」。

物件遺失

家長如發現小朋友於營會期間遺失個人物品，請致電日營部熱線查詢（熱線：22687079）。如遺失物品於一個月內無人認領，本部亦會保留處理該物件的最終權利。另外，遺失物品的狀況如不適合儲存，本部會將立即處理而不作任何通知。

特別需要

如參加者於參與活動時需要特別照顧，家長請於報名前聯絡本部同事電話：2268 7079，我們將盡力安排經驗導師以一對一比例帶領參加者進行營會活動。

費用項目

報名費用已包括每日的午餐、戶外旅行的交通費及入場費。

為保障各參加者之安全，請核對清楚參加者之年齡是否附合要求。如有發現不附合者，本部將取消其參加資格，並不會退回任何已繳款項。恕不接受傳真、電郵或電話留位。各項活動名額有限。額滿即止。

健康狀況申報表、營會須知、天氣影響停課政策及退款政策將隨報名後附上。

安全及衛生

本部一向十分重視各參加者及職員之安全，我們已實施一系列政策及指引，以保障參加者及社區之健康。

衛生 - 導師會定時安排參加者清潔手部，特別是與食物接觸前後，以減低細菌散播的機會。於進食及進行食物製作期間，本部職員會密切留意每個細節，以確保食物之衛生。本部一向積極鼓勵互相分享及關懷別人，但為了安全及衛生，所有分享食物的環節亦將稍為暫停。身體不適之參加者 - 為保障各參加者之安全，我們希望各家庭與本部合作，有病的小朋友留在家中休息，本部會要求帶病的參加者或職員於活動進行期間離開。需要服用藥物的參加者 - 如參加者在活動期間需要服用藥物。請家長在活動集合之時通知活動負責人，家長另須填寫「服藥授權書」

Personal Information Collection Statement

Purpose of Collection:

The YMCA of Hong Kong (“YMCA”) will collect your personal data to provide you/ the applicant activities, programmes or services relevant to your needs, including but not limited to monitoring, review and development of activities, programmes or services.

Transfer data:

The personal data you provide will be made available to persons working in the YMCA or persons designated on a need-to-know basis. Apart from this, the data may only be disclosed to the relevant parties in the circumstances listed below:

- a) Co-operative activity, programme or service providers.
- b) Other parties commissioned by the YMCA for the purposes of processing insurance claims, evaluation and review of services and other issues related to the YMCA.
- c) Where such disclosure is authorized or required by law.

Access to Personal Data:

Expected where there is an exemption provided under the Personal Data (Privacy) Ordinance, you have a right of access to and correction of personal data or obtaining a copy of the data you provided. However, under normal circumstances, data will be erased after fulfilling the purposes of collection.

Enquiries:

Please ensure that the data you provide to the YMCA are accurate. If you would like to access or correct your personal data, please contact the YMCA in writing.

Contact: Head Office of Member and Community Services(M&CS), the YMCA of Hong Kong
Postal Address : No.41 Salisbury Road, Tsim Sha Tsui , Kowloon

Declaration by the Applicant:

- 1) I understand and accept that the YMCA will, through this application form, collect my personal data which would be used for processing my application, arranging activities, programmes or services (including but not limited to class administration work). Promotion, evaluation of services, statistic. Surveys, investigation and following up of other issues related to the YMCA.
- 2) I understand and accept that the YMCA may transfer my personal data for the above purposes.
- 3) I understand and agree that the YMCA may use my personal data (including but not limited to my name, correspondence address(es), contact telephone number(s), email address(es), photo record(s) and videos record(s)) to provide me information on related activities, programmes or services ; I also accept that my personal data may be used for promoting activities , programme or services provided by the YMCA.

收集個人資料聲明

收集資料的目的：

香港基督教青年會會使用你提供的個人資料，向你/申請人提供你/申請人所需要的活動、課程或服務，包括但不限於監察、檢討及發展各項活動、課程或服務。

資料的轉移：

你所提供的個人資料，會供本機構在工作上有需要知道該等資料的職員或指定人士使用。此外，本機構在需要時亦只會向下列有關方面披露該等資料：

- a) 活動、課程或服務的協辦機構或團體
- b) 香港基督教青年會所委託的指定機構，（不限於）處理/跟進保險索償個案、檢討服務等事宜
- c) 由法律授權或法律規定須向其披露資料的有關方面

查閱個人資料：

除了《個人資料（私隱）條例》規定的轄免範圍外，你有權要求查閱和更正本機構所持有關於你的個人資料，你亦可要求索取這些資料的副本。不過，在一般情況下，如收集資料的目的已經完成，本機構會刪除有關的個人資料。

查詢：

請確保你向香港基督教青年會提供的資料正確無誤。如欲查閱或更正本機構所持有關於你的個人資料，請以書面方法提出。

聯絡：香港基督教青年會會員及社區服務部總辦公室

地址：九龍尖沙咀梳士巴利道 41 號

申請人聲明：

- 1) 本人明白及同意香港基督教青年會會透過本表格收集本人的個人資料，並利用我的個人資料，作處理申請、安排課程/活動/服務內容（包括但不限於班務、點名、貼堂、領取證書）、宣傳、檢討服務、統計、意見調查、調查/跟進其他與香港基督教青年會有關的服務或事宜之用。
- 2) 本人明白及同意香港基督教青年會可能把本人的個人資料作上述的資料轉移用途。
- 3) 本人明白及同意香港基督教青年會可能會使用本人的個人資料（包括但不限於姓名、地址、電郵地址、電話號碼、肖像及錄像），向本人提供有關香港基督教青年會的相關活動、課程或服務及推廣活動等的相關資訊；並同意香港基督教青年會亦可能把本人的個人資料，用作推廣香港基督教青年會提供的活動、課程或服務之用地。